



# SUSTAINABLE MD INDEX IDMD

December 2025



# SUSTAINABLE MD INDEX (IDMD\*)

- Initiative launched by C2DS\*\*. Cofinanced Snitem/C2DS
  - Work started in January 2024
- Initial objectives:
  - Decision-making tool for purchasing, between two similar MD
  - Simple and operational. To harmonize criteria
  - Data accessible to manufacturers
- Methodology : Afnor Spec
  - Robust and reliable framework
  - Ensuring consensus
- Mixed working group of manufacturers, phamacists, and buyers
- Tests conducted by manufacturers to adjust the methodology



# SUSTAINABLE MD INDEX

- Definition of 6 “vulnerabilities”
- Elaboration of criteria and associated scales

## ENVIRONMENTAL ASPECT

### 1. GES

- Types of raw materials
- Energy impacts
- Transportation

### 2. Water

- Consumption in manufacturing phase: reduction target
- Consumption during use
- Water reusability

### 3. Waste Management

- Recycled materials in the device
- Separability
- Recycled materials in packaging
- Packaging recyclability

### 4. Toxicity/Bioaccumulation

- Risk substances (manufacturing process and final product)
- User information (labeling/instructions)



➔ 1 overall score MD + 1 score per vulnerability

## SOCIAL ASPECT

### 5. Health and Safety at Work

- Investments in work environment
- Social practices in the manufacturing country
- Prevention/safety systems
- Monitoring of work accidents

### 6. Inclusion and Diversity

- Demographic composition (young, seniors, women/men)
- Salary equity
- Inclusion of people with disabilities
- Anti-discrimination efforts

# CRITERIA AND SCALES

Vulnerability	Criteria	Scoring item	Weighting
<b>1 - Vulnerability 1 - Greenhouse gas emission</b>	<b>Criterion 1 - Type of raw materials</b>	Carbon intensity of the product	10 points
		Rare materials	5 points
	<b>Criterion 2 - Energy impacts</b>	Main production site	5 points
		Use of green or renewable energy sources	10 points
	<b>Criterion 3 - Transportation</b>	Mode of transportation and distances travelled	5 points
		Multi-site manufacturing	5 points
<b>2 - Vulnerability 2 - Water consumption</b>	<b>Criterion 1 - Quantity of water</b>	Water consumption for manufacturing	5 points
		Water consumption for use	5 points
	<b>Criterion 2 - Water reusability</b>	/	5 points
<b>3 - Vulnerability 3 - Waste production and management</b>	<b>Criterion 1 - Medical device</b>	Proportion of recycled material	5 points
		Separability of the parts of the device	5 points
	<b>Criterion 2 - Packaging</b>	Proportion of recyclable material	5 points
		Recycled materials used for packaging	5 points

Exemple

Scale (CO <sub>2</sub> eq/kWh)	Score
< 20	5 points
< 40	4 points
< 200	3 points
< 400	2 points
< 600	1 point
600 or more	0 points

Data base : Total electricity mix carbon intensity indicator:  
<https://app.electricitymaps.com/map/all/yearly>

Exemple

Water reuse rate	Score
Between 0% and 1%	0 points
1% to 30%	1 point
30% to 60%	3 points
60% to 100%	5 points
No water required for MD production	5 points

Part of water reused on the total quantity of water consumed on the main production site (if MD manufacturing process requires water).

# CRITERIA AND SCALES

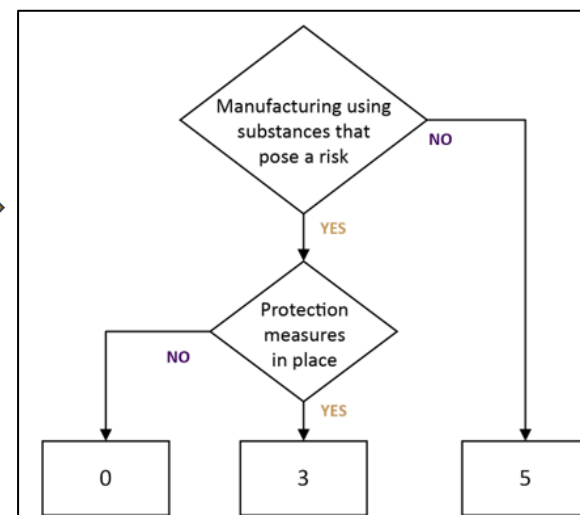
Vulnerability	Criteria	Scoring item	Weighting
4 - Vulnerability 4 - Health, safety and working conditions	Criterion 1 - Working environments	Investments	3 points
		Operating expenditure	4 points
	Criterion 2 - Social practices in the country	SPI	5 points
	Criteria 3 - Occupational health and safety protection system	Percentage of workforce covered	3 points
	Criterion 4 - Occupational accidents	Number of fatalities and OA rate	5 points
5 - Vulnerability 5 - Bioaccumulation and toxicity	Criterion 1 - Manufacturing phase	Manufacturing process	5 points
		Finished product	5 points
	Criterion 2 - Use phase	Labelling	5 points
		Information	5 points
6 - Vulnerability 6 - Inclusion and diversity	Criterion 1 - Demographic composition	Employment of young people and seniors	10 points
		Gender distribution at top management level	10 points
	Criterion 2 - Pay equity	/	20 points
	Criterion 3 - Accessibility and inclusion of persons with disabilities	/	20 points
	Criterion 4- Fight against discrimination	/	20 points

Exemple

SPI	Note
< 70 %	0 point
≥ 70 % et < 80 %	3 points
≥ 80 %	5 points

Date base: Global Social Progress Index (SPI):  
<https://www.socialprogress.org/social-progress-index>

Exemple



Use of substances that pose risk in manufacturing process.  
 (\* »Substance that pose risk « according to definitions in MDR and REACH)

Exemple

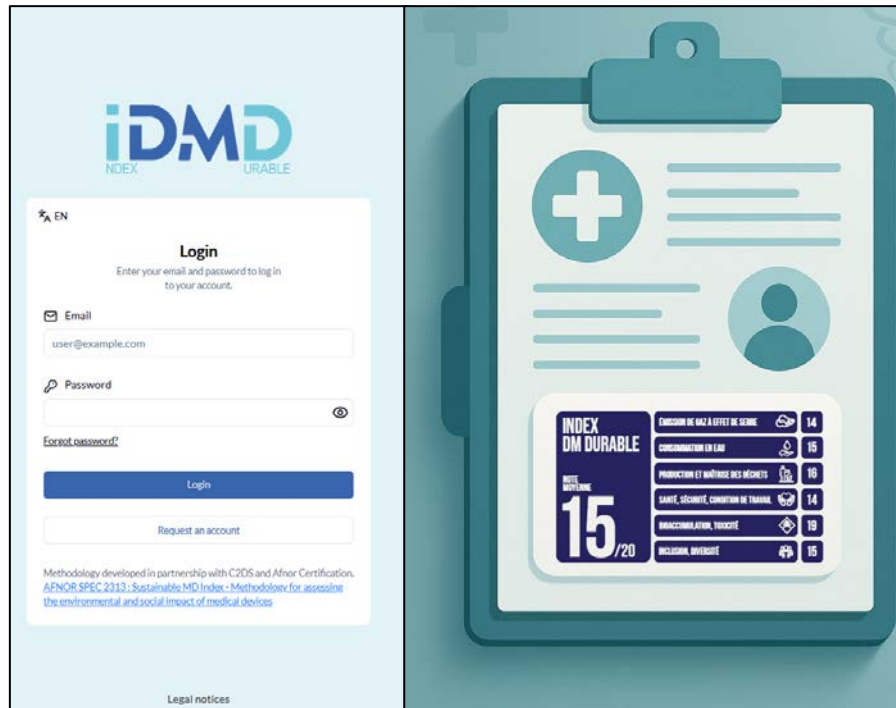
Representativeness rate	0% to 3%	3% to 9%	9% and over
Score	4 points	12 points	20 points

Proportion of persons with disabilities represented among the company's employees (on main production site).

# ONLINE AUTOMATED TOOL

➔ Link on [Snitem.fr](https://snitem.fr)

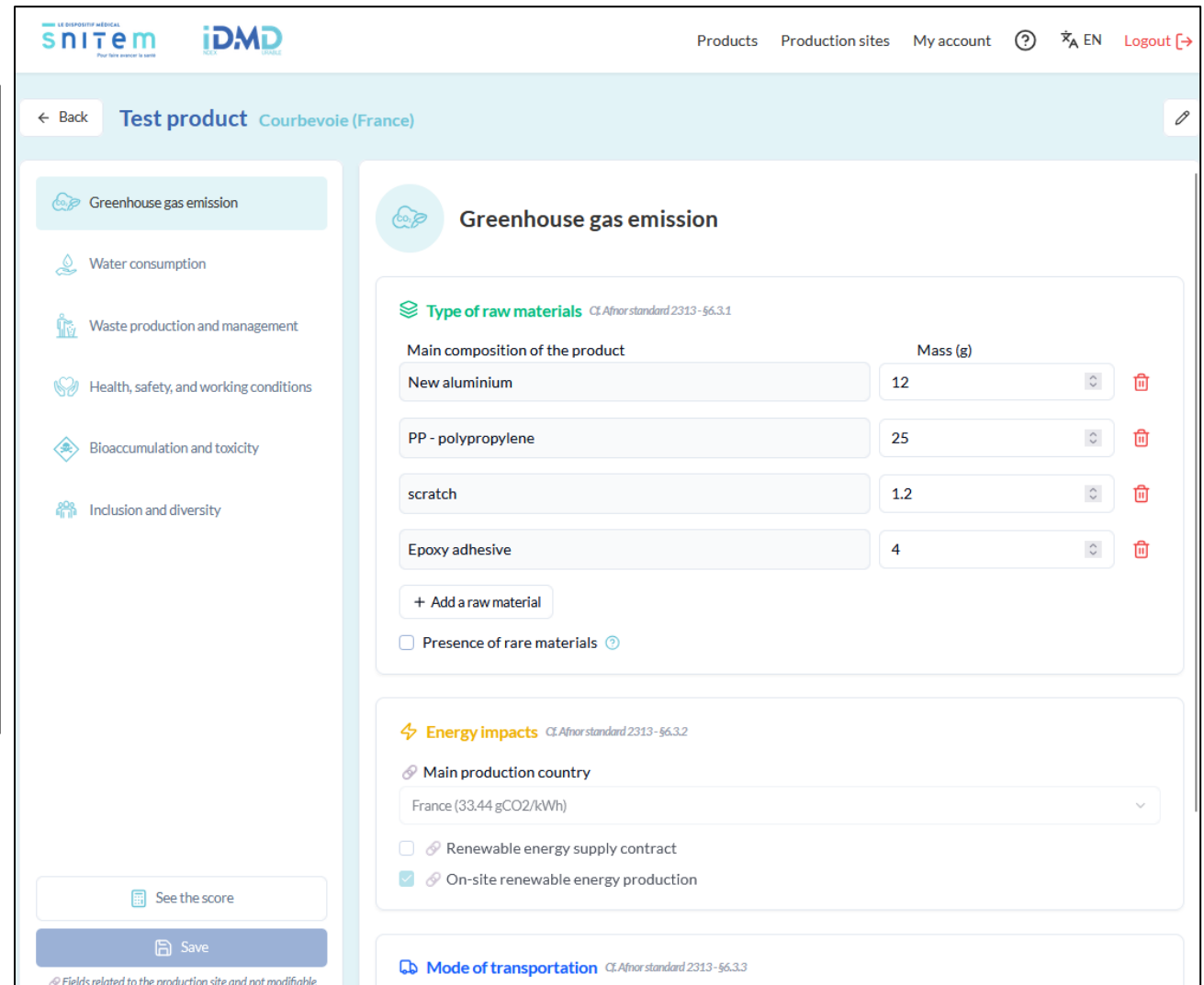
- To help manufacturers to calculate IDMD of their products
- Only manufacturers have access to their data (not even the Snitem)
- The platform generates a PDF with the score, to be provided as part of tenders



The image shows the IDMD login and account creation interface. On the left, there is a login form with fields for Email and Password, a 'Login' button, and a 'Request an account' link. Below the login form, there is a note about the methodology developed in partnership with C2DS and Afnor Certification. On the right, there is a large graphic of a clipboard with a plus sign and a circular profile icon. Below the graphic, there is a table showing the IDMD score and its components.

Component	Score
EMISSION DE GAZ A EFFET DE SERRE	14
CONSERVATION EN EAU	16
PRODUCTION ET MATIERES DES DECHETS	16
SANTÉ, SÉCURITÉ, COMFORT DE L'USAGER	14
BIOACCUMULATION, TOXICITÉ	18
INCLUSION, DIVERSITÉ	15

**INDEX OM DURABLE**  
15 / 20



The image shows the IDMD product test interface. The top navigation bar includes links for Products, Production sites, My account, and Logout. The main heading is 'Test product Courbevoie (France)'. The interface is divided into two main sections: 'Greenhouse gas emission' and 'Energy impacts'.

**Greenhouse gas emission**

Type of raw materials CI Afnor standard 2313 - §6.3.1

Main composition of the product	Mass (g)	
New aluminium	12	<input type="text"/>
PP - polypropylene	25	<input type="text"/>
scratch	1.2	<input type="text"/>
Epoxy adhesive	4	<input type="text"/>

+ Add a raw material

☐ Presence of rare materials ?

**Energy impacts** CI Afnor standard 2313 - §6.3.2

Main production country

France (33.44 gCO2/kWh)

☐ Renewable energy supply contract

☒ On-site renewable energy production

**Mode of transportation** CI Afnor standard 2313 - §6.3.3

Fields related to the production site and not modifiable

# SUSTAINABLE MD INDEX

## IDMD is :

- ✓ A tool:
  - For comparison
  - Voluntary
  - Simplifying
  - Harmonizing
- ✓ Product-focused
- ✓ Based on existing criteria (CSRD, national databases, ...)
- ✓ Complementing to existing tools (labels, indices, ...)

## IDMD is not :

- ✓ Environmental labeling
- ✓ An evaluation tool for environmental or social virtue
- ✓ Exhaustive !
- ✓ Redundant with other tools

# IMPLEMENTATION TIMELINES

- **Methodology** available for free on Afnor website
- **Automated tool** for manufacturers only available on Snitem website
- **Implementation :**
  - Adoption by buyers and manufacturers: june > December 2025...
  - Start integration of IDMD in Tenders : ~Q4 2025, ideally on an optional basis
  - Collection of feedback throughout the deployment phase (work on potential version 2 from 2026)



## DISCOVER OUR PUBLICATIONS :



snitem.fr

Syndicat national  
de l'industrie  
des technologies médicales

### Contacts :



**Anne-Laure GAVORY**

CSR manager

+33 (0)6 34 31 21 37 / [rse@snitem.fr](mailto:rse@snitem.fr)

**Karine Chagnes**

Secretary General

+33 (0)6 26 49 36 81 / [contact@c2ds.eu](mailto:contact@c2ds.eu)